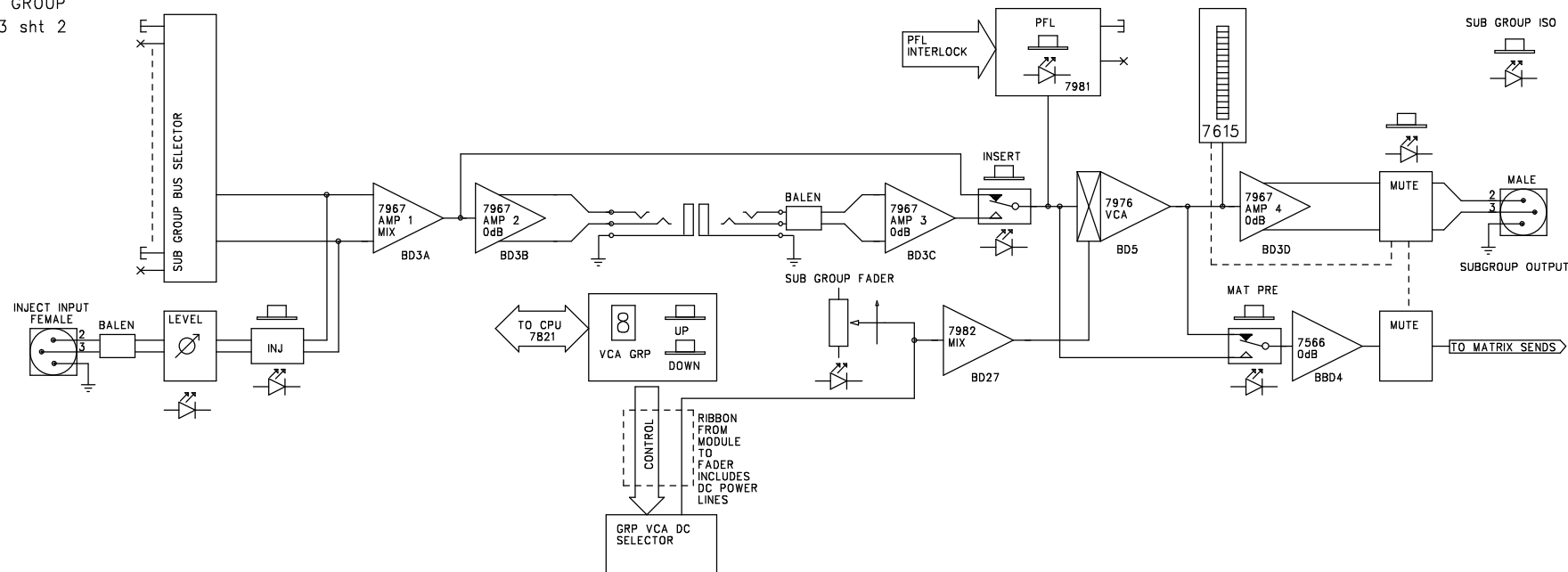
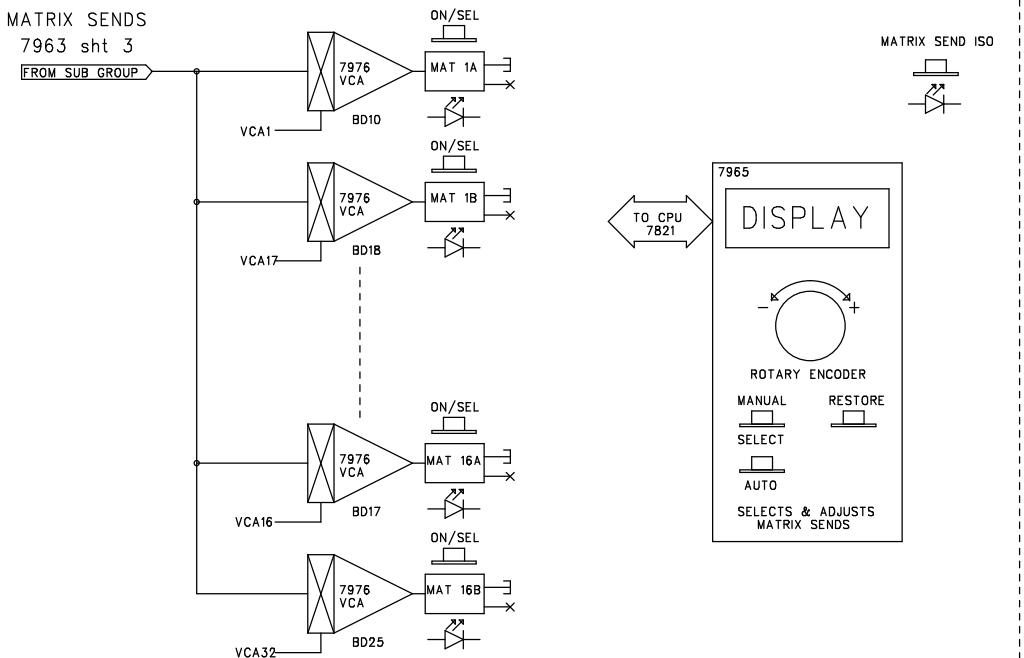


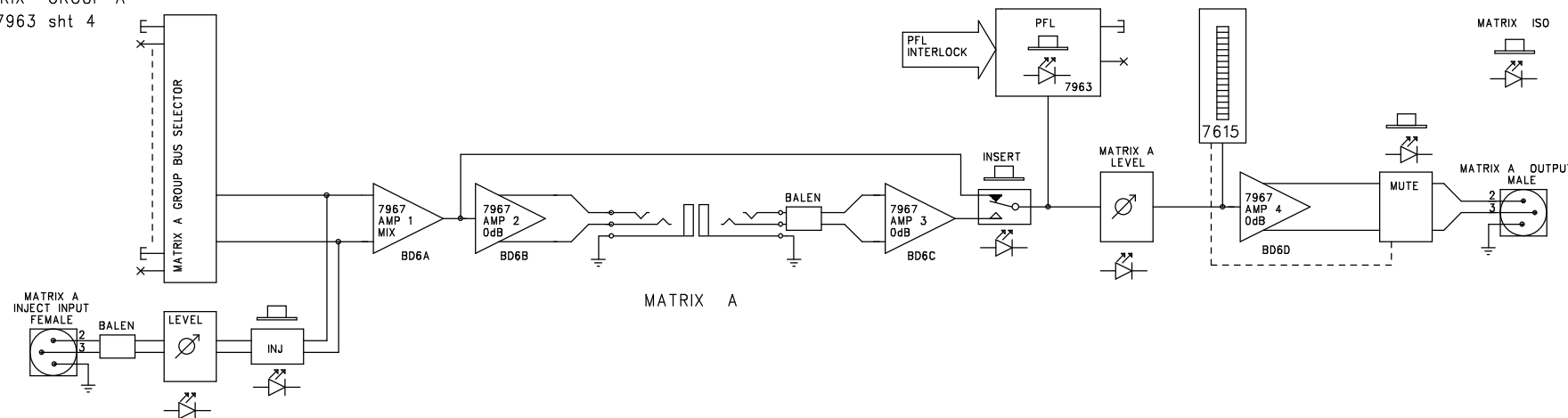
SUB GROUP
7963 sht 2



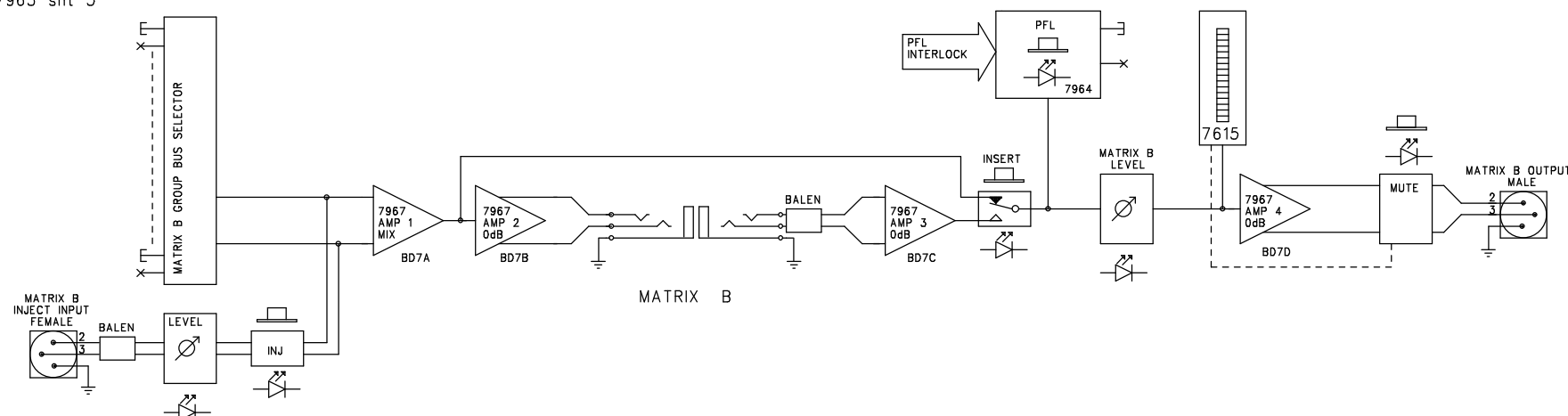
MATRIX SENDS
7963 sht 3



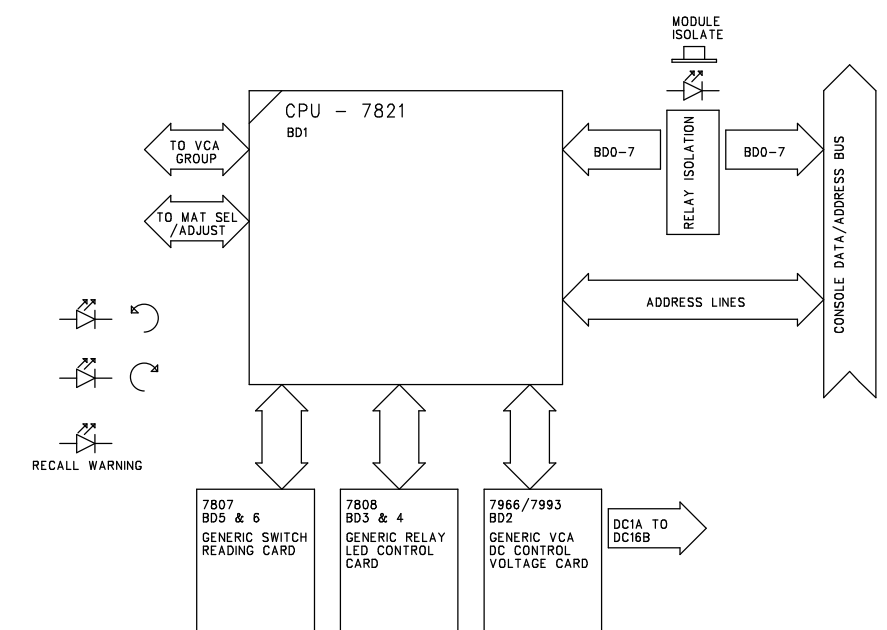
MATRIX GROUP A
7963 sht 4



MATRIX GROUP B
7963 sht 5



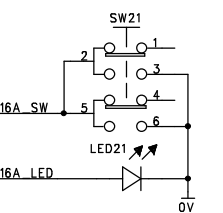
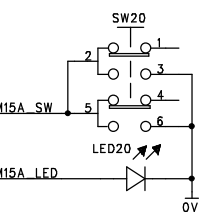
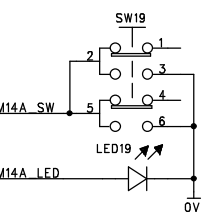
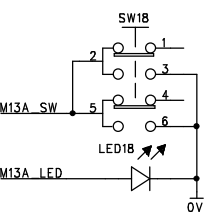
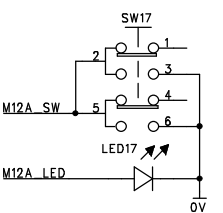
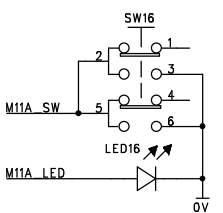
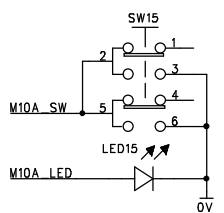
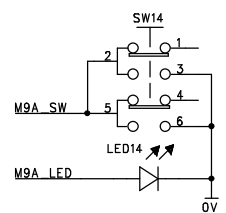
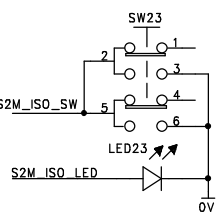
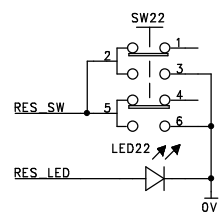
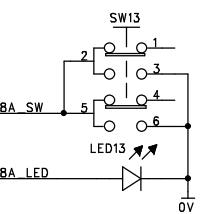
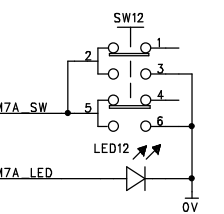
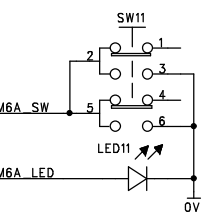
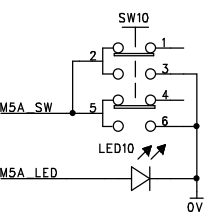
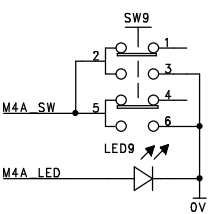
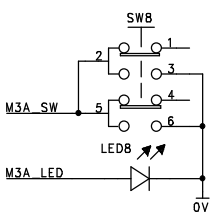
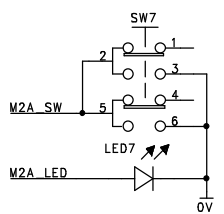
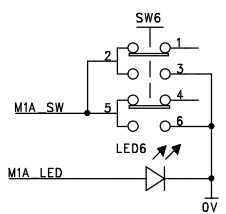
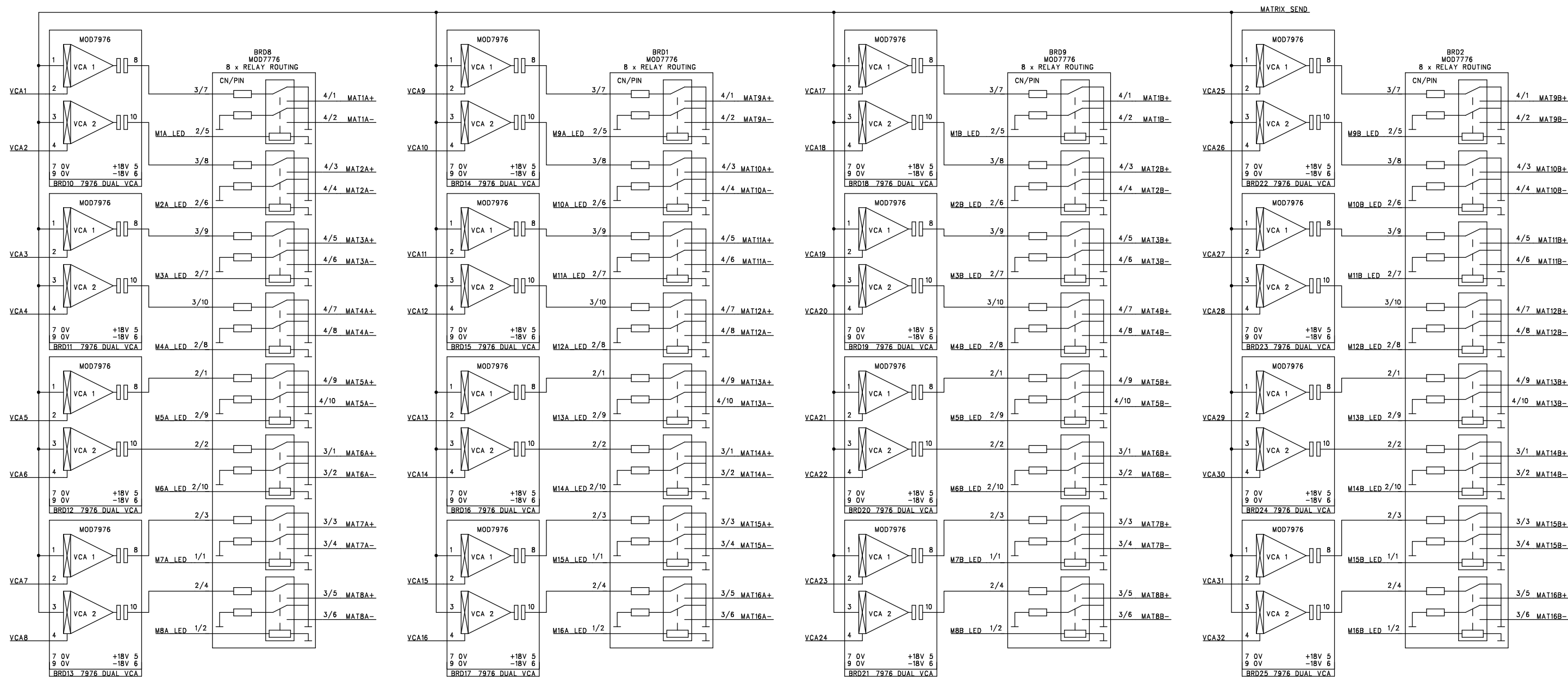
MODULE LOGIC



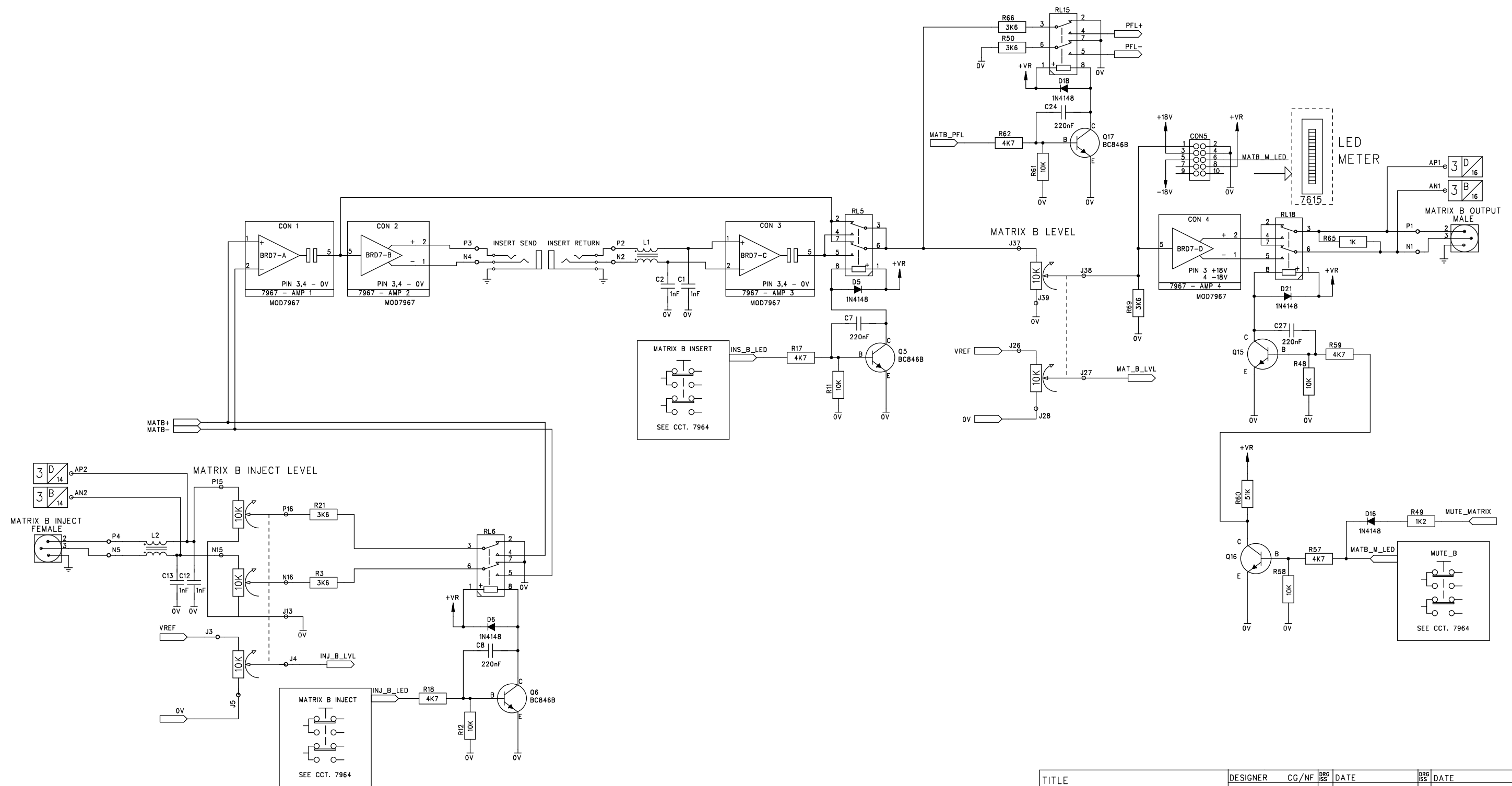
NOTE

ALL SWITCHES WITH THE EXCEPTION OF MODULE ISOLATE
ARE READ BY THE 7807 GENERIC SWITCH READING CARDS
ALL LEDS/RELAYS WITH THE EXCEPTION OF MODULE ISOLATE
ARE CONTROLLED BY 7808 GENERIC RELAY/LED CARDS

TITLE		DESIGNER	CG/NF	DRG ISS	DATE	DRG ISS	DATE
PROG J-TYPE GROUP MODULE WITH FULL RECALL		DRAWN	NF	1	21.06.98	5	
		CHECKED	XX	2	31.07.98	6	
		APPROVED	XX	3	10.11.00NF	7	
		1st ISSUE		4		8	
© 1998 CADAC ELECTRONICS LTD		CADAC DRWG No. A2.7963					SHEET 1 OF 7



TITLE		DESIGNER	CG/NF	DRG ISS	DATE	DRG ISS	DATE
PROG J-TYPE GROUP MODULE WITH FULL RECALL		DRAWN	NF	1	21.06.98	5	
		CHECKED	XX	2	31.07.98	6	
		APPROVED	XX	3	10.11.00NF	7	
		1st ISSUE		4		8	
© 1998 CADAC ELECTRONICS LTD		CADAC DRWG No. A2.7963				SHEET 3 OF 7	



TITLE	DESIGNER	CG/NF	DRG ISS	DATE	DRG ISS	DATE
PROG J-TYPE GROUP MODULE WITH FULL RECALL	DRAWN	NF	1	21.06.98	5	
	CHECKED	XX	2	31.07.98	6	
	APPROVED	XX	3	10.11.00NF	7	
	1st ISSUE		4		8	
© 1998 CADAC ELECTRONICS LTD	CADAC DRWG No. A2.7963				SHEET 5 OF 7	

